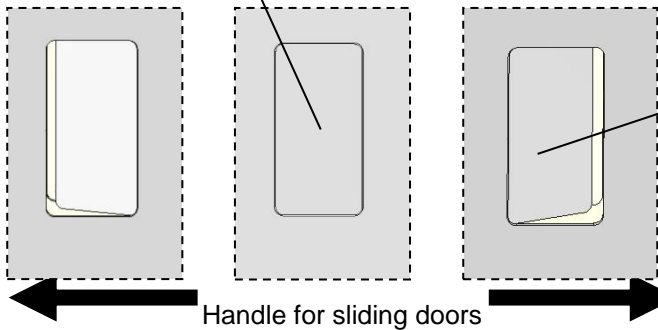
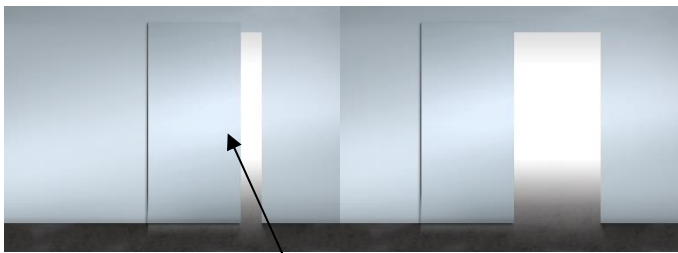
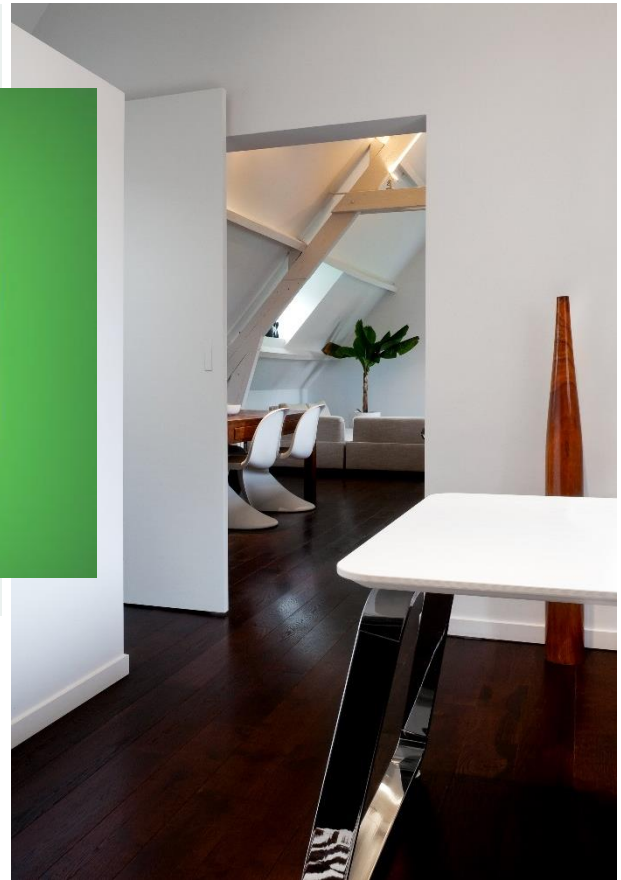


The No-Ha 2.0 Slide is a door handle that recedes into the door panel and can be used on all sliding doors that slide into the wall or in front of it. **The handle is operable on both sides with plenty of space for the fingers.**

The handle has the same look as the No-Ha 2.0 for revolving doors. The No-Ha cover plate is not part of the mechanism so that it can be made to match the finish of the door panel.

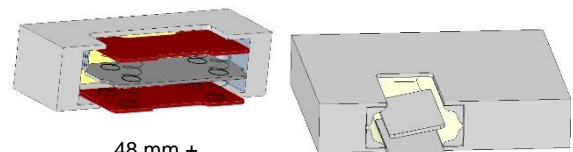
The No-Ha cover plate is available as an accessory in MDF and in brushed stainless steel.

The milling in the door panel is the same as with the No-Ha 2.0 revolving doors. An extra piece must be fitted on the top of sliding doors that slide into the wall so that the door can be drawn out of the wall.

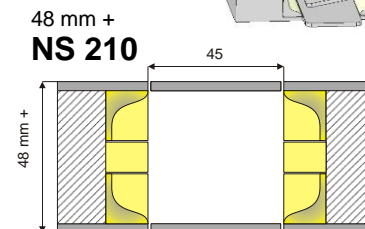
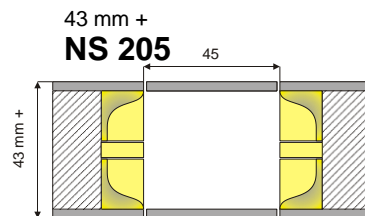
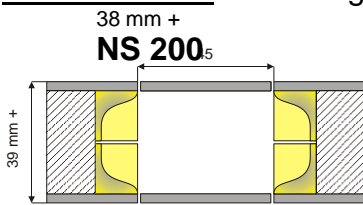


Dimensions:

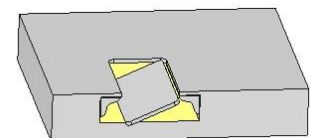
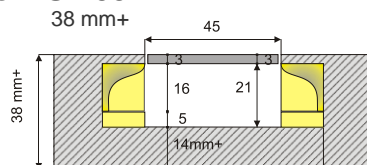
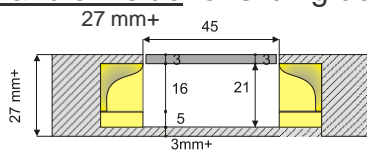
- Opening: 87mm x 45mm
- Cover plate: 85.5mm x 43.5mm
- **Note:** The cover plate is made to match the surface finish of the door panel and is NOT part of the door handle mechanism.



Handle 2 sides for Slidingdoors



Handle 1 side for sliding doors :NS 105



For cupboards and drawers see **No-Ha single**